

**AIRPORT FUTURES  
LAND USE / TRANSPORTATION SUBCOMMITTEE MEETING #4  
MEETING NOTES**

<b>Date and Time:</b>	<b>10/28/08, 6 - 8 PM</b>
<b>Location:</b>	<b>Portland International Airport St. Helens Room</b>
Attendees:	John Griffiths, Trimet Nancy Hendrickson, City of Portland BES Barry Hennelly, Metro Jim Howell Andrew Johnson, ODOT Fred Stovel, CNN John Weigant, AIR
Staff:	John Gray, Portland Office of Transportation Scott King, Port of Portland Jay Sugnet, City of Portland Project Manager
Unable to attend:	Bob Sallinger, Audubon Andy Cotugno, Metro Catherine Ciarlo, Portland Planning Commission Vicky Thompson, CNAC Erwin Bergman, CNN Laura Hudson, City of Vancouver

**1. Opening and Introductions – Fred Stovel**

Fred thanked everyone for coming to the meeting and there was a brief round of introductions. He then reviewed the agenda.

*Hand Out: Meeting Agenda and September Meeting Notes*

Fred reviewed the meeting notes from the previous Land Use and Transportation Subcommittee meeting. There was discussion on the follow-up items listed relating to the ability of the transportation model to address some of the issues and concerns raised at the last PAG meeting (e.g. modeling MAX operating 24/7, future C-Trans service between PDX and SW Washington, and different mode split assumptions).

Fred also requested electronic copies of the powerpoints from the previous meeting. Scott will email them to the group.

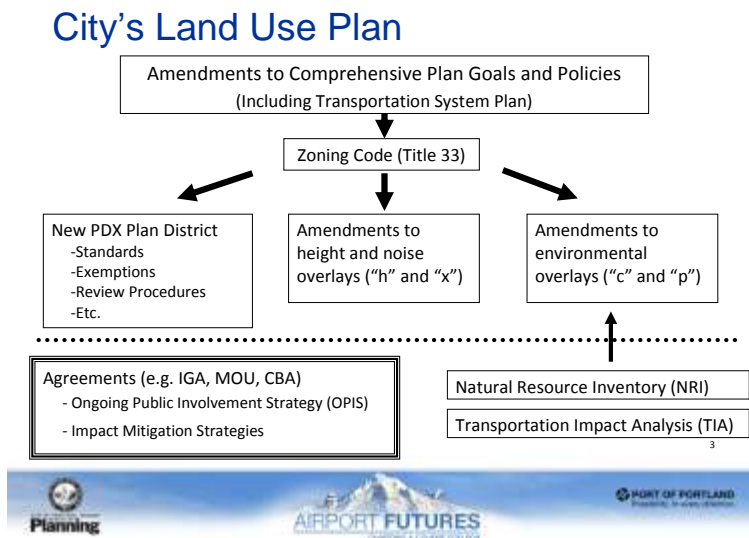
**2. Transportation Update**

Scott mentioned that work is continuing on the consultant contract for the Traffic Impact Analysis. He will send out a draft RFP within a few weeks to the group to review with the goal of having a consultant on board by January.

Jay added that the original concept for the Traffic Impact Analysis was for the City to hire the consultant using Port money as a way to ensure objectivity of the consultant. Staff reconsidered this in light of the process to date that has built trust with the PAG and is proposing for the Port to hire the consultant directly with City and Port staff as joint contract managers. Members of the subcommittee agreed with this approach.

### 3. Land Use Plan Components

Jay gave an overview of the project schedule and the main components of the City's Land Use Plan.



Jay described the City-Port staff working groups that will create draft products for subcommittee review and refinement. There are 4 working groups: 1. Plan District; 2. Height Overlay; 3. Noise Overlay; and 4. Natural Resources.

Jay then described the Agreements box and its relation to the work of the Public Involvement Subcommittee (PISC). Jay gave an overview of a presentation by Doug Zehnn and Steve Johnson given to the PISC last month. Jay continued to describe the work the City and Port are doing to gather information on what other airports do related to airport advisory groups and their role in airport planning and development decisions. The December PISC meeting will focus on the role and structure of non-airport advisory groups (City, County, etc.).

Questions: there were several clarifying questions and Fred asked where noise fits into the process. Jay responded that this group will address noise as part of the Noise Overlay discussion, but that also the Master Plan Alternative SC will review noise model runs on the alternatives that will include a third runway. There is overlap between the groups, but the PAG will need to address the policy questions of what do we do about noise in this process – the same as the height, and transportation issues – do we recommend revisions to the overlays based on the possibility that a third runway will be constructed, or not.

### 4. Economic Development Inventory – Jay

Jay reviewed the draft scope of work and the importance of asking the basic questions in the scope of work to help inform the City's Land Use Plan.

1. *What is the industrial mix in the PDX vicinity today – in terms of land supply, industry mix, and emerging clusters of related businesses?*
2. *What is the PDX vicinity's potential for airport-dependent/related business development?*
3. *What is needed in terms of site and infrastructure needs to increase airport-dependent/related and other industrial and employment development in the PDX vicinity?*

Jay mentioned that this was originally intended as staff work, but a decision was made to hire a consultant to do this work in the next 3-4 months. Volunteers to help select the consultant are welcome.

#### Questions:

Barry mentioned that Metro is beginning to develop an industrial inventory that addresses the issue of land use compatibility in rail and truck corridors. Jay will follow up with the Metro contact to coordinate these two efforts. Jay also mentioned that the Inventory work will provide benefit to the Citywide efforts underway as part of the Portland Plan – namely the economic development strategy.

Other questions related to how far out will the study go. The boundary of the study is the same as the land use study area boundary, but there may be airport dependent or related uses well beyond – even in Hillsboro. One suggestion was to use a time distance for travel to the airport. Jay mentioned that we are attempting to keep the scope manageable and that the Port has lots of data related to who uses the airport (Washington County), but that we will raise these issues with the consultant as we finalize the contract.

*Handout: Airport Futures – Economic Development Element 9-25-08 Draft Scope*

#### **5. Next Steps**

Jay mentioned that the next meeting will focus on a draft Concept of the Plan District Land Use and an outline of the City's Land Use Plan along with a more detailed schedule of work to come.

#### Next Meeting

The next meeting will occur in early December. It will be held downtown at the Port of Portland building between 6-8 pm.