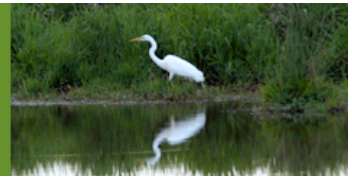


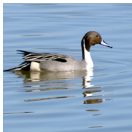
2009-10 Objectives and Targets



Reduce Energy Consumption and Purchase Renewable Energy

FY 2009-10 Targets:

- Reduce energy consumption across all Port facilities by at least 500,000 kilowatt-hours per year.
- Evaluate the feasibility of purchasing 100 percent of all Port electric energy from renewable sources by using cost-effective options in the energy market by July 2010.



Minimize Impacts to Water Resources

FY 2009-10 Targets:

- Reduce water consumption at Portland International Airport by retrofitting an additional 30 toilets with dual-flush, low-flow toilet valves, which reduce water usage by one to three gallons per flush.
- Reduce water use from irrigation by purchasing and installing four Evapotranspiration Managers at Marine and Industrial Development Facilities by July 2010.



Reduce Waste Generation and Hazardous Materials Use

FY 2009-10 Targets:

- Develop and implement a mixed plastics (rigid and vinyl plastics) recycling program for Port facilities by June 30, 2010.
- Expand program that encourages Port employee reuse of office supplies and minimizes the purchase of new supplies in order to reduce costs and promote a culture of conservation.
- Develop a Sustainable Purchasing Program to identify, evaluate and recommend alternative sources of products to replace purchases not currently obtained from sustainable sources (continuation of 2007-08 target).



Minimize Impacts to Air Quality

FY 2009-10 Targets:

- Reduce Port direct and indirect greenhouse gas emissions 15 percent below 1990 levels by 2020.
- Reduce diesel particulate matter from Port-controlled operations by 25 percent from 2000 baseline levels by 2015.



Minimize Impacts and Seek Opportunities to Enhance Natural Resources

FY 2009-10 Targets:

- Extend partnership through July 2010 with Friends of Trees by sponsoring additional tree plantings in neighborhoods adjacent to or near Port facilities to help offset impacts from Port operations. Include partnership opportunities for pilot Port employee service/team-building project. Develop appropriate public information messaging.
- Create a public information and education display focusing on invasive species control/reduction strategies on Port-owned properties by July 1, 2010.
- At the Smith and Bybee Wetlands Natural Area, conduct two seasons of invasive species control, with regular monitoring and native seeding and plantings, by July 2011.
- Participate in a City of Portland effort to enhance the south bank of the Columbia Slough at the confluence of the Willamette River by providing funding for in-water and riparian habitat improvements on Port-owned property by July 2010.